

TOYOTA COROLLA CROSS



2024 MODEL TOYOTA COROLLA CROSS HYBRID XLE
1.8L PETROL AUTOMATIC
MODEL CODE – ZVG10L-EHXEBV

TECHNICAL FEATURES

ENGINE: 1.8L HEV, 4-CYLINDERS

MAX OUTPUT: 121 HP (COMBINED)

MAX TORQUE (ENGINE): 142 N.M / 3600 RPM

MAX TORQUE (ELECTRIC MOTOR): 163 N.M

CONTINUOUS VARIABLE TRANSMISSION (CVT)

FRONT WHEEL DRIVE

FUEL TANK CAPACITY: 36L

5 PASSENGERS (INCLUDING DRIVER)



EXTERIOR FEATURES

17" ALLOY WHEEL

TIRES SIZE: 215/60R17

HALOGEN HEAD LIGHTS

DAYTIME RUNNING LIGHT (DRL)

LED FRONT FOG LAMPS

SMART ENTRY SYSTEM FOR DRIVER AND FRONT PASSENGER

COLORLED AND POWERED OUTSIDE REAR VIEW MIRRORS WITH TSL

AUTO RETRACTABLE POWER SIDE MIRRORS

COLORLED OUTSIDE DOOR HANDLES

ROOF RAILS

REAR SPOILER

MOON ROOF

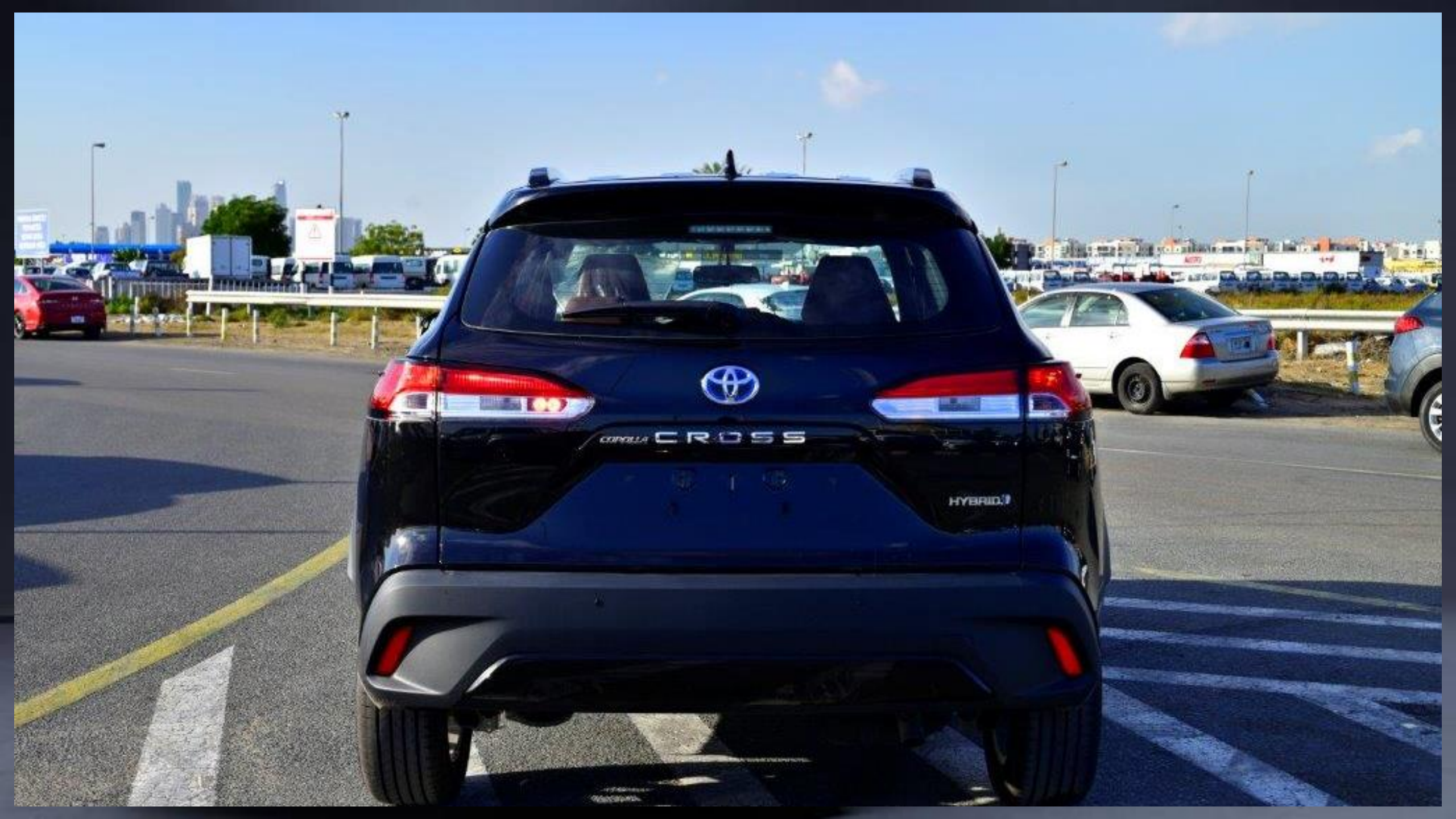




HYBRID









COROLLA CROSS

HYBRID



INTERIOR FEATURES

ENGINE PUSH START BUTTON

FABRIC SEAT

DRIVER SEAT VERTICAL ADJUSTER

TELESCOPIC STEERING WHEEL

STEERING WHEEL CONTROLS

4.2 INCH MULTI INFORMATION DISPLAY

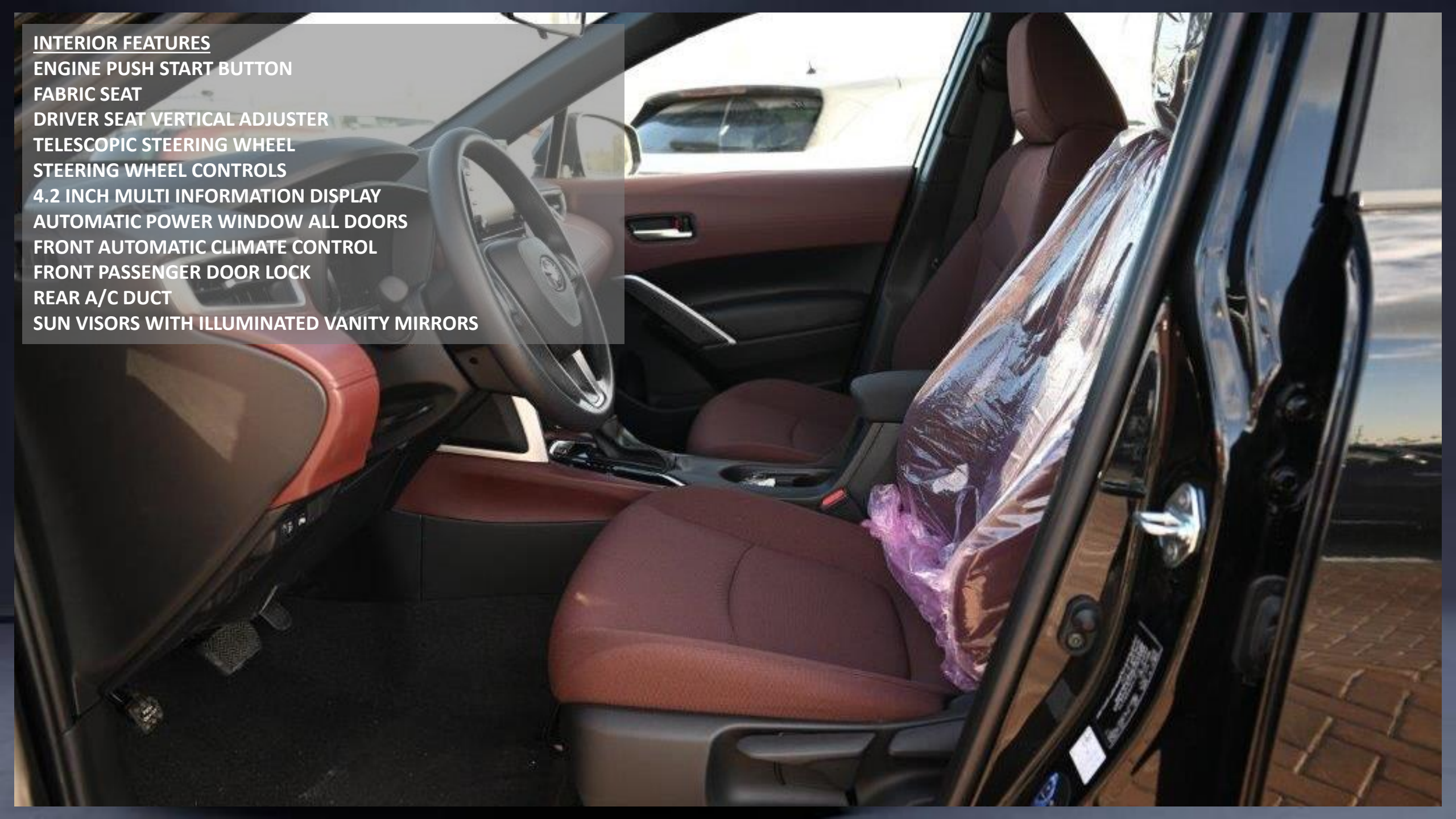
AUTOMATIC POWER WINDOW ALL DOORS

FRONT AUTOMATIC CLIMATE CONTROL

FRONT PASSENGER DOOR LOCK

REAR A/C DUCT

SUN VISORS WITH ILLUMINATED VANITY MIRRORS





AUDIO & SAFETY FEATURES

DISPLAY AUDIO MULTIMEDIA TOUCH SCREEN 8 INCH

APPLE CARPLAY SYSTEM

USB PORT

6 SPEAKERS

CRUISE CONTROL

DRIVE MODE SELECT (ECO / NORMAL / SPORT)

FRONT PARKING SENSORS

REAR PARKING SENSORS

REAR CAMERA (

AIRBAGS (DRIVER & FRONT PASSENGER)

ANTI-LOCK BRAKE SYSTEM (ABS)

VEHICLE STABILITY CONTROL (VSC)

TIRE PRESSURE WARNING SYSTEM (TPWS)

ANTI-THEFT SYSTEM (ENGINE IMMOBILIZER)

HILL-START ASSIST CONTROL (HAC)

TONNEAU COVER

FLOOR MAT

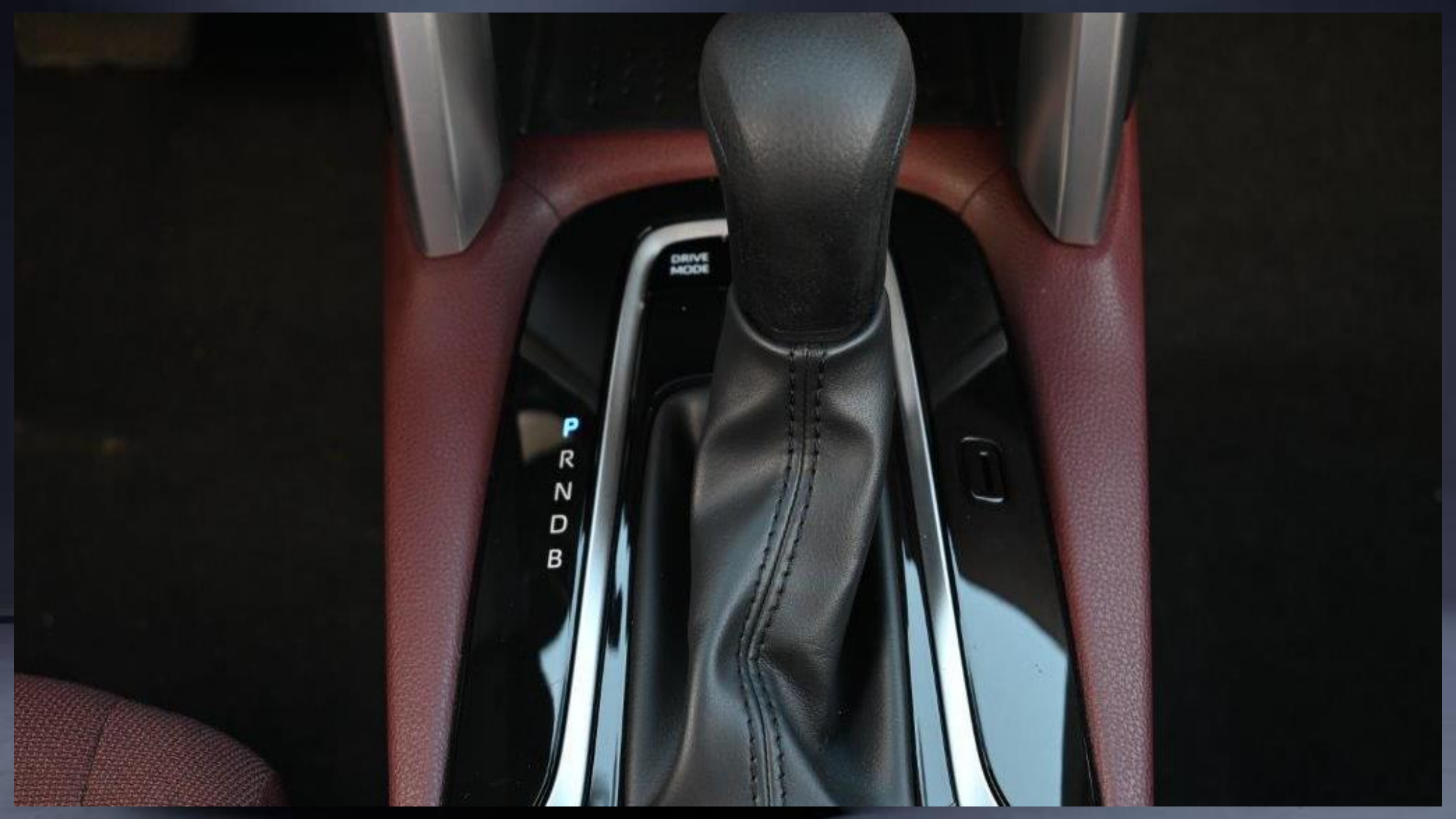
SAFETY REGULATION KIT

TIRE INFLATOR









DRIVE
MODE

P
R
N
D
B





CONTACT US

Address: Block 3, Showroom no.25, Al Awir, Ras Al khor Auto Market, Dubai, UAE

Land Line: +971 43332623

Email: info@saharamotorsuae.com

